



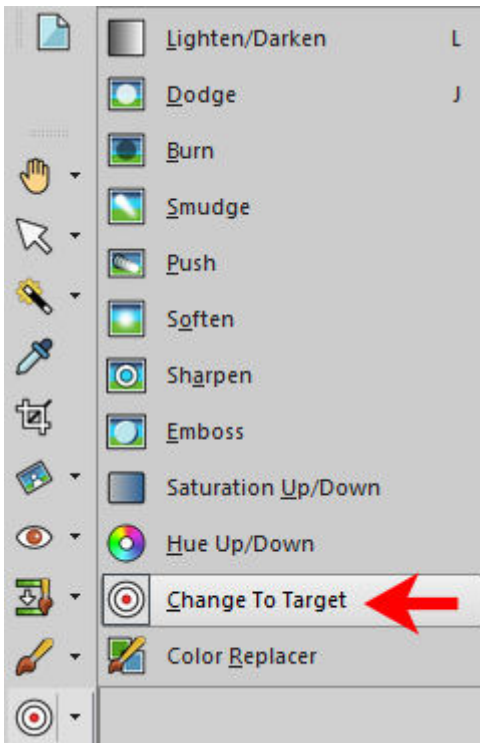
## Changing colors in PaintShop Pro

### Description

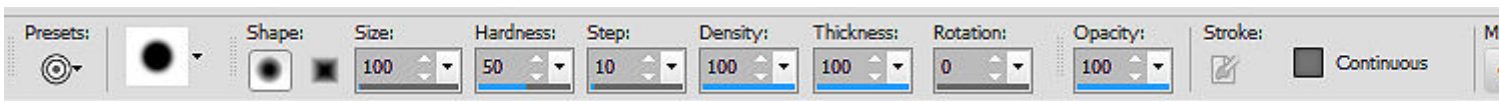
PaintShop Pro has a lot of common tools and photographers have the ability to tweak their photos in many ways. Those tools are not just for professionals, as everyone can use them to edit photos in creative ways. Let's see how you can change the color of a particular element with PaintShop Pro. Although there are several ways to change colors, we will look at the **Change to Target** tool.

### Change to Target

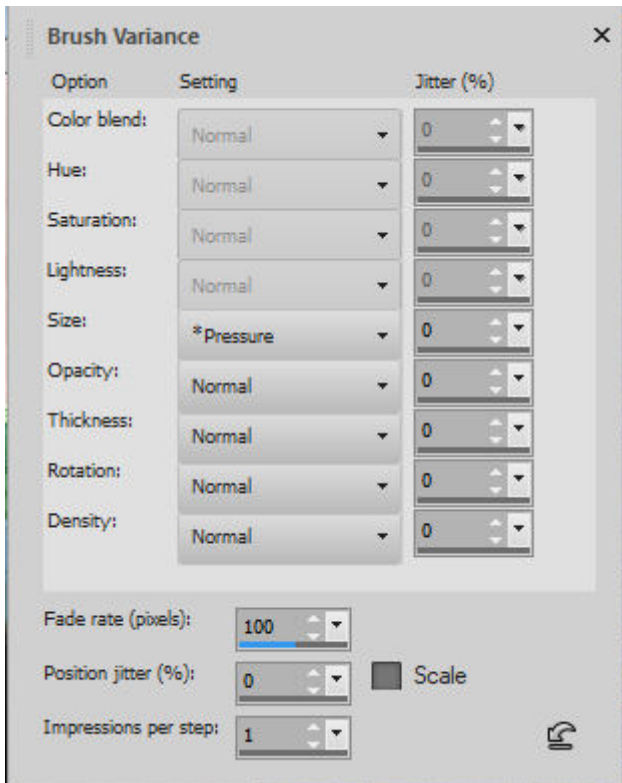
This tool has been available for many versions. I can confirm that it was already in PaintShop Pro, in the old Jasc 8 version. It might not be readily visible in the **Tools** toolbar as the **Lighten/Darken** tool is typically the default one displayed. However, by clicking on that tool, you will open the fly-out list of other tools, and the **Change to Target** will be there for you to select.



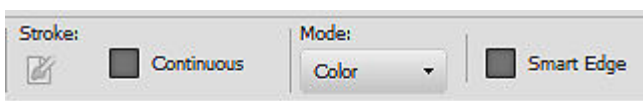
Once you have activated the **Change to Target** tool, you will notice a very familiar toolbar of settings appears. They are almost identical to the **Brush** toolbar.



All the settings for the **Size, Hardness, Step, Density, Thickness, Rotation** and **Opacity** are identical and will behave exactly the same as the regular **Brush** tool. Even the **Brush Variance** palette (F11) can have some settings adjusted. This is important to remember as the **Size** setting might be set to vary based on **\*Pressure**, if you are using a graphic tablet. If you don't know that, you would be wondering why the brush is not behaving as expected, and show small or large from time to time.



Since we want to change color of something, we will have to make sure that **Mode** is set to **Color**.



This will ensure that the color you are selecting is the color that will be used and shown on the object in question.

## Paint on your surface

Now that you have set the various settings for the tool, you will choose the target color you want. On this photo, I will change the color of the dress, from red to blue (I picked the same blue as in the boy's shorts).



In the **Materials** palette, I will select a blue for the foreground. This will allow me to use the left-click on the mouse to brush over the surface. The **Change to Target** tool will paint over all the pixels but will ensure that the white pixels will likely stay white. The darker pixels will be treated as if it were greyscaled.



As you can see, the darker pixels

became darker blues, and the lighter ones are still matching the lightness. Notice, however, that whether the pixels were red or orange, the **Change to Target** brush will cover them all. This is why this technique might not work too well on a very busy multicolored pattern. That is, unless you want the

tedious task of painting tiny sections at the time or unless you want to turn it into a monochrome pattern.

Unlike other tools, you have no way to "unerase" if you go over the edge. This means that you have to be very careful and reduce the size of the brush tip when you get into tricky sections. Another way to avoid going over the edge is to make a selection where it is risky. Then, you just brush over the selection.



And now, we have our dress in a different color.



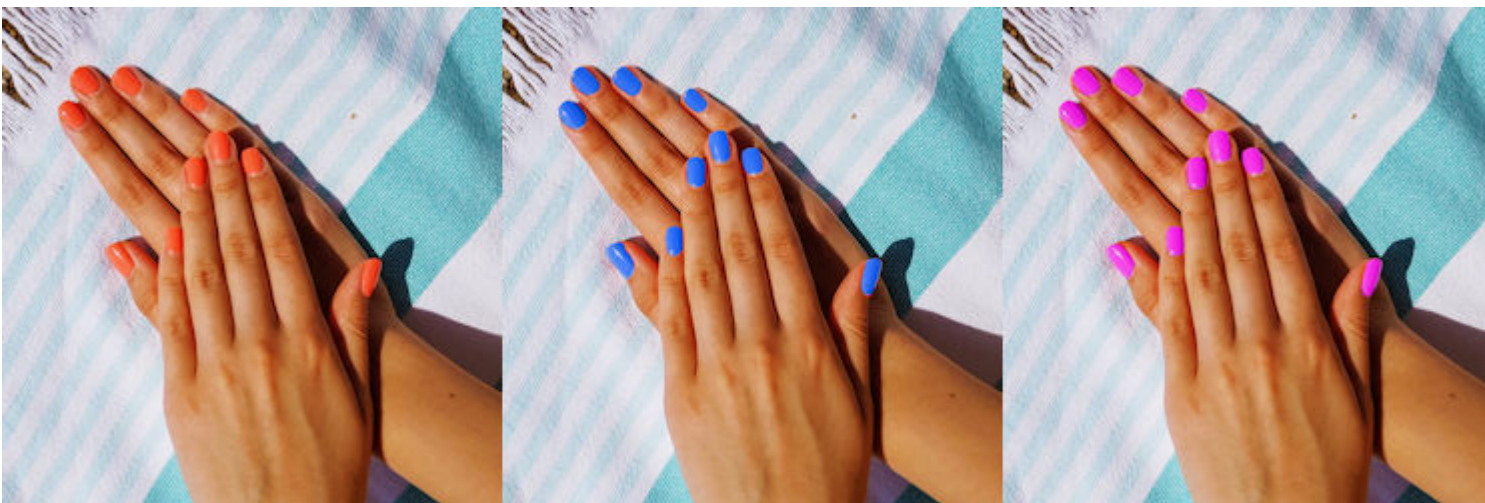
In this example, I purposefully left the flowers in their original colors, just to keep some interest. Brushing over them would have made everything too monochrome, in my opinion, but that is just a personal preference.

One situation where this technique might not work too well would also be images where the color you want to cover is blended into something else that you cannot get around to, like hair. If that is what you have on your image, you might want to reduce the opacity of the brush tip in that area. The color won't be as bright, but you might find the correct balance between fainter color and not coloring on the hair.

Using this tool, you can now expand your wardrobe and accessories!



Or how about changing nail color without much work?



What else will you change?

**Date Created**  
September 14, 2020  
**Author**  
myclone