



Cut a photo based on a preset shape

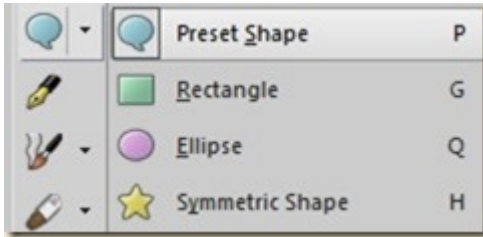
## Description

If you want to have your photo displayed differently than the traditional square or rectangular shape, you can use any of the preset shapes from your Paintshop Pro, or any shape you might have added to your collection. Here is a simple tutorial on how to achieve that result.

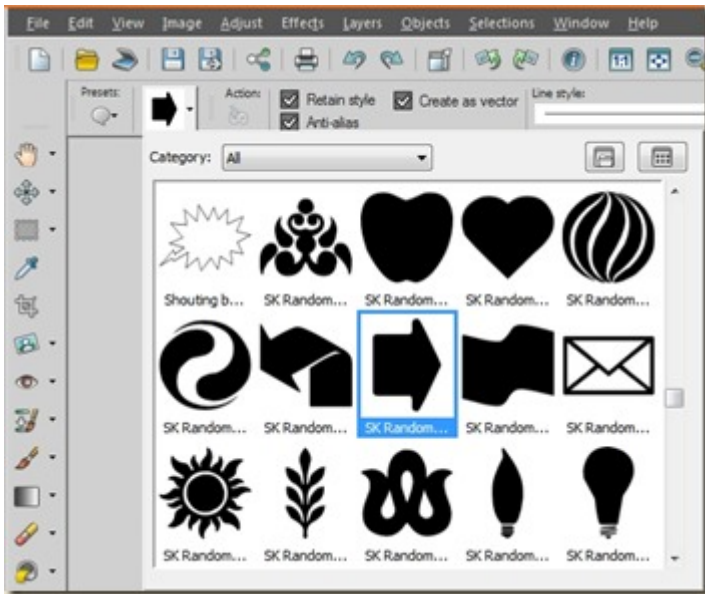
1- Open your image on your workspace.



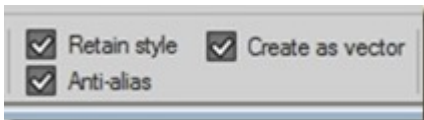
2- Activate the **Vector** tool of your choice. You can choose a **Symmetric** shape, an **Ellipse** shape, a **Rectangular** shape or a **Preset shape**. I will be using the **Preset shape** as it gives me more interesting options of shapes.



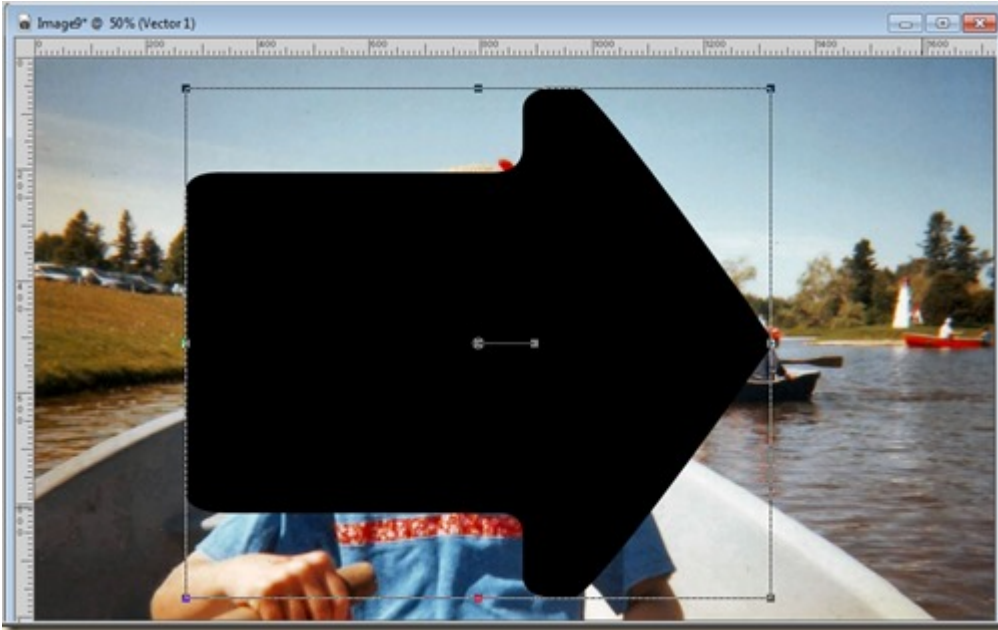
3- In the toolbar, pull down the list of shapes and choose the one you want to use.



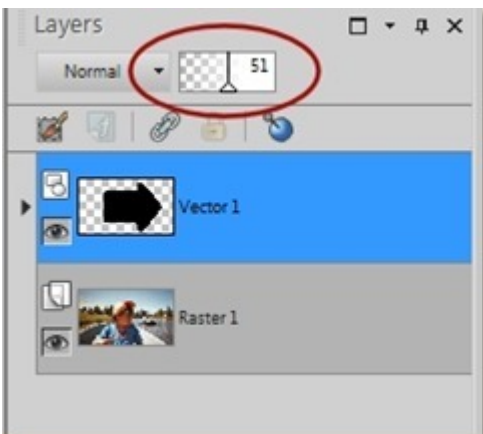
4- Keep the checkboxes checked for **Retain style** and **Create as vector**.



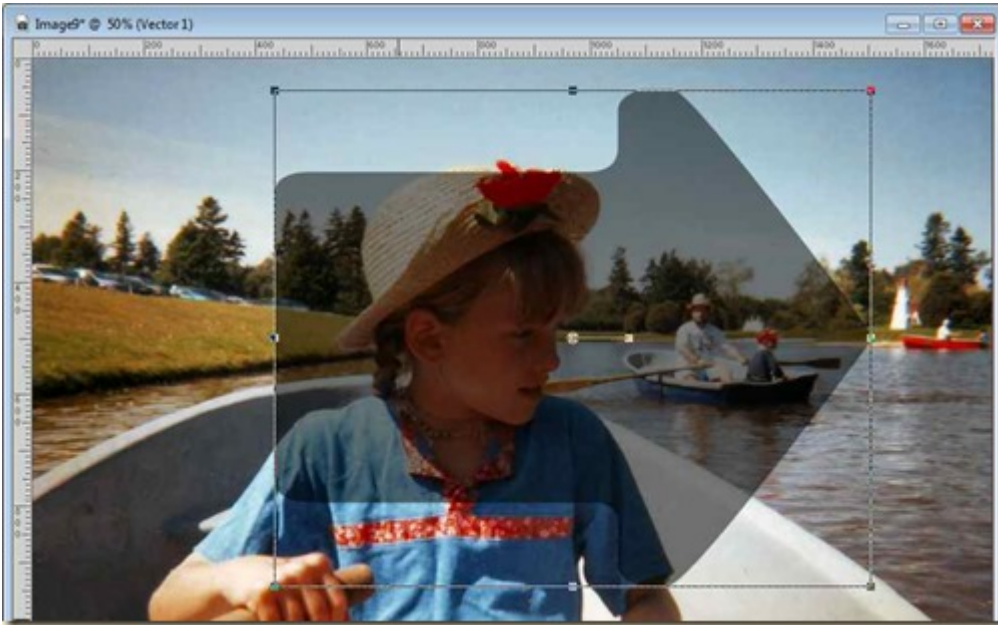
5- Draw the shape on your photo.



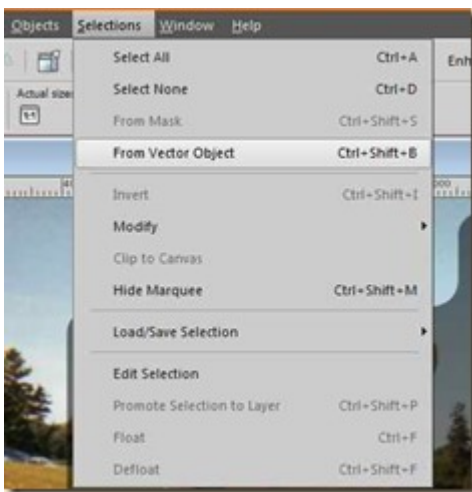
6- Reduce the opacity of this vector layer so you can see better what parts of the photo will be inside that shape.



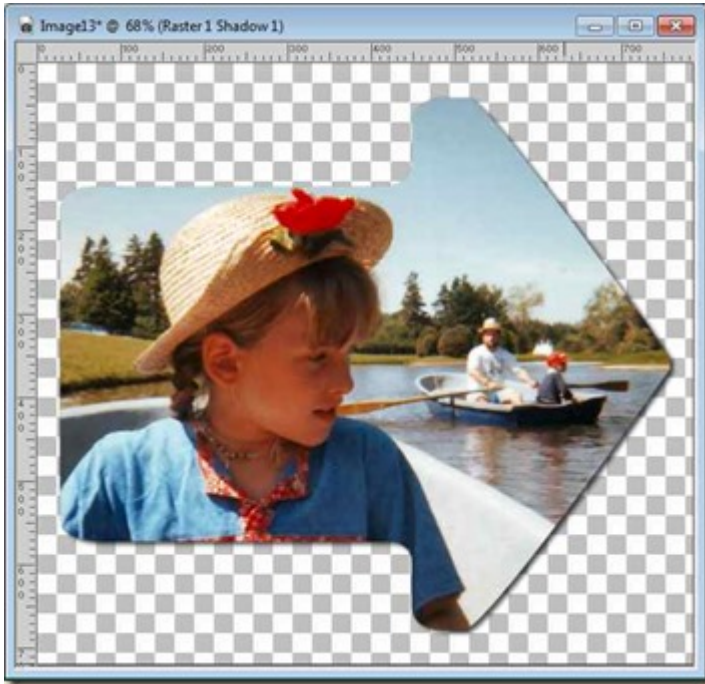
7- Adjust the placement of the shape as you want. You can also resize it, or rotate it. Since it is a vector shape, the edges will stay well-defined.



8- Go to **Selections > From Vector Object** and it will turn your shape into a selection. If the **Vector** tool is still active, you will not see the "marching ants" that indicate a selection, but it is still there (activate another tool if you want to see them).



9- Activate the layer with the photo. **Copy (Edit > Copy or Ctrl-C)** and paste as a new image (**Edit > Paste as New Image or Ctrl-Shift-V**)



Now you have your photo, cut in a unique shape while your original photo was untouched. You can now use your cut photo in any graphic project you want.

For a video demonstration of this technique, check it out in the [Tips & Tricks section](#).

Go ahead and cut your photos in unique shapes and show us the result. How will you be using those photos?

**Date Created**

September 11, 2014

**Author**

myclone