

## Sort your fonts



Sort your fonts

### Description

Are you collecting a lot of cute and fun fonts only to realize that you are getting overwhelmed by the sheer number of fonts you have accumulated over time? And when you want to use one font, do you tend to revolve around the same ones all the time? You can't spend hours sifting through everything you have, right? It is time to clean up.

### Use a font viewer

There are [different font viewers](#) available to you, depending on your system and your preferences. I still like to use **TheFontThing**, and it still works for me. I use Windows 10 and it is now VERY slow, but it still works. This font viewer (and others) allows you to view what a font looks like. That way, you can decide if you want to keep it and if so, in what category. Trying to sort by name only is like ordering parts for your car based on inventory numbers alone. Just not convenient!

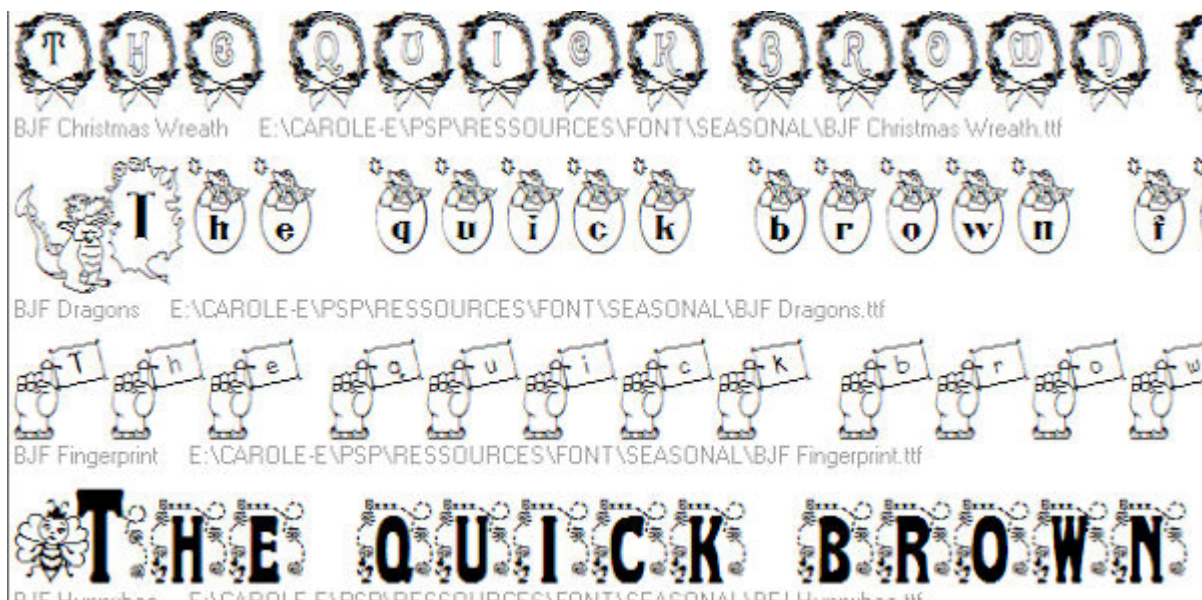
### Choose major categories

Although my system is by no mean the only one, I found that starting with three categories could be a good start. Those categories are **Dingbats fonts**, **Themed fonts**, **Foreign fonts**, and **Regular fonts**. You would recognize them in this way:

**Dingbat fonts** are simply designs and don't resemble any actual alphanumerical characters:



**Themed fonts** are actual letters but decorated or embellished to fit a particular theme, whether it is Halloween, flowers, Christmas, etc.



**Foreign fonts** might or might not be relevant for you, but they would include fonts for foreign languages like Arabic, Chinese, etc.

Еру йгшсл икшт ащч огъзы ш

95 E:\CAROLE-E\PS\P\RESSOURCES\FONT\SYMBOLS AND OTHER LANGUAGES\95.TTF



96 E:\CAROLE-E\PS\P\RESSOURCES\FONT\SYMBOLS AND OTHER LANGUAGES\96.TTF

הת כסעטק נש רב ח זטז

97 E:\CAROLE-E\PS\P\RESSOURCES\FONT\SYMBOLS AND OTHER LANGUAGES\97.TTF

Regular fonts are, well.... the rest of the ordinary fonts.

## Create sub-categories

Here is where you will have even more flexibility and it will depend on various factors like what you have collected over time, what type of work you will do using those fonts, and so on. Among the possible sub-categories, you can use these:

**All caps**, which are fonts that have only uppercases. Any lowercase will either appear as uppercase or be missing completely. Those fonts are still useful if you want to create titles or alphas.

THE QUICK BROWN FOX JUMPS OVER

IY2KBUG E:\CAROLE-E\PS\P\RESSOURCES\FONT\ALL CAPS\ly2kbug.ttf

THE QUICK BROWN FOX

(HungryFrog) E:\CAROLE-E\PS\P\RESSOURCES\FONT\ALL CAPS\HUNF\_.TTF

THE QUICK BROWN FOX

02 E:\CAROLE-E\PS\P\RESSOURCES\FONT\ALL CAPS\02.TTF

THE QUICK BROWN FOX

02760 E:\CAROLE-E\PS\P\RESSOURCES\FONT\ALL CAPS\02760.ttf

THE QUICK BROWN FOX

04 E:\CAROLE-E\PS\P\RESSOURCES\FONT\ALL CAPS\04.TTF

**Script fonts** could be those that simulate handwriting fonts, where the letters are attached to each other.



*The quick brown fox jump*

35 E:\CAROLE-E\PS\P\RESSOURCES\FONT\SCRIPTS\35.TTF

*The quick brown fox jumps ov*

37 E:\CAROLE-E\PS\P\RESSOURCES\FONT\SCRIPTS\37.TTF

*The quick brown fox jumps over the laz*

38 E:\CAROLE-E\PS\P\RESSOURCES\FONT\SCRIPTS\38.TTF

*The quick brown fox jumps over the lazy*

40 E:\CAROLE-E\PS\P\RESSOURCES\FONT\SCRIPTS\40.TTF

**Bold fonts** might be interesting to have on their own as you might want to use those "fat" fonts to incorporate papers or even photos. The thicker the font is, the easier it is to view a photo.

**THE QUICK BROWN**

A.C.M.E. Secret Agent Bold E:\CAROLE-E\PS\P\RESSOURCES\FONT - COMMERCIAL\CU-BOLD\A.C.M.E. Se

**The quick brown fox jum**

A750-Sans-Bold E:\CAROLE-E\PS\P\RESSOURCES\FONT - COMMERCIAL\CU-BOLD\A750-Sans-Bold.ttf

**The quick brown fox jump**

A750-Sans-Medium-Regular E:\CAROLE-E\PS\P\RESSOURCES\FONT - COMMERCIAL\CU-BOLD\A750-Sans-t

**The quick brown fox ju**

A831-Roman-Bold E:\CAROLE-E\PS\P\RESSOURCES\FONT - COMMERCIAL\CU-BOLD\A831-Roman-Bold.ttf

**Formal fonts** might be used for more elaborate projects, like wedding invitations. They are typically not used in day to day projects so keeping them in their own folder will make fewer for you to browse through.

THE QUICK BROWN FOX JUMP

King Arthur E:\CAROLE-E\PS\P\RESSOURCES\FONT\FORMAL\KINGARTH.TTF

The quick brown fox jumps over

Kingthings Xander E:\CAROLE-E\PS\P\RESSOURCES\FONT\FORMAL\Kingthings Xander.ttf

The quick brown fox jumps over t

Kingthings Xander Outline E:\CAROLE-E\PS\P\RESSOURCES\FONT\FORMAL\Kingthings Xander Outline.ttf

The quick brown fox jumps ove

LaserLondon Regular E:\CAROLE-E\PS\P\RESSOURCES\FONT\FORMAL\LASLOND\_.TTF

**Curly fonts** could be all caps, or not, they are a little fancy or fun but not formal.

THE QUICK BROWN FOX JUMP

Cruickshank E:\CAROLE-E\PS\P\RESSOURCES\FONT - COMMERCIAL\CU-CURLY\Cruickshank.TTF

The quick brown fox jumps

Curlmudgeon E:\CAROLE-E\PS\P\RESSOURCES\FONT - COMMERCIAL\CU-CURLY\Curlmudgeon.ttf

The quick brown fox jumps

Curlmudgeon Hollow E:\CAROLE-E\PS\P\RESSOURCES\FONT - COMMERCIAL\CU-CURLY\Curlmudgeon Hollow.ttf

*The quick brown fox jumps*

Curlmudgeon Hollow Italic E:\CAROLE-E\PS\P\RESSOURCES\FONT - COMMERCIAL\CU-CURLY\Curlmudgeon Hollow Ita

**Grungy fonts** are those that seem to show wear and tear. They can be graffiti-like or just worn out.

THE QUICK BROWN FOX J

Armalite Rifle E:\CAROLE-E\PS\P\RESSOURCES\FONT - COMMERCIAL\CU-GRUNGY\Armalite Rifle.ttf

THE QUICK BROWN FOX JUM

Artistamp Medium E:\CAROLE-E\PS\P\RESSOURCES\FONT - COMMERCIAL\CU-GRUNGY\Artistamp Medium.TTF

THE QUICK BROWN FOX JUM

Artistamp Medium Jumbled E:\CAROLE-E\PS\P\RESSOURCES\FONT - COMMERCIAL\CU-GRUNGY\Artistamp Medium J

The quick brown fox jumps

Ashcan BB E:\CAROLE-E\PS\P\RESSOURCES\FONT - COMMERCIAL\CU-GRUNGY\Ashcan BB.ttf

Of course, these are only a few types of sub-categories you can consider but you can think of others depending on what you tend to look for. If you are sometimes looking for particularly thin or narrow fonts, you can set a sub-category for **Narrow**. Or if you need accented characters, you might want to make a particular category for those.

## Sort by usage

Depending on what you will be using the fonts for, you might need to know which ones are allowed for commercial use. This could be another category altogether. Of course, this label should be identified as soon as you download the font as you will have a hard time finding out the terms of use once they are collected in your massive folder!

If you don't use any font for commercial use (creating alphas for scrapbooking, or posters for Fiverr), this might not be as necessary but you might want to be safer by still sorting that way. Who knows if you are not asked to do a paid job later on and then you would be stuck having to figure out if you are allowed to use this or that font.

## Delete

You might have a thousand fonts, but are they really that different and unique? Sometimes, some fonts are very similar. Do you have any particular reason to keep them all? Remember that it means more fonts to browse through. When I once purchased a bundle of 1000+ fonts, I realized that close to half of them were repeats or almost-repeats of other fonts. Go on. Delete. You are unlikely to use all of the 500 remaining fonts so why add an extra 500? I know, it is hard to delete. If you really can't hit the Delete button, you can always make a separate folder for "To Delete" or "Useless", or something like that. If you really insist!

Of course, sorting hundreds or thousands of fonts is not a quick task. It will take several days or even weeks. But work on it a little at the time and you won't feel too overwhelmed. And if you are just starting to collect those fun fonts left and right, now is the time to start a system. Believe me; you will

need one!

**Date Created**

August 12, 2019

**Author**

myclone