



4 Ways I Set up my Workspace

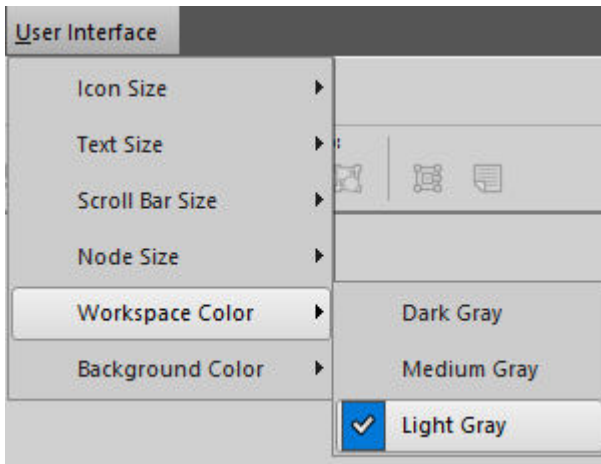
Description

Whether you are following a tutorial from the DIAMOND membership, attending a live class in the Campus or watching a YouTube video where I demonstrate various techniques, you might be wondering if we are using the same version, because my workspace and tools seem to be different from yours. Don't worry. The reason they look different is that I have customized it to suit MY preferences. If you want to recreate the same workspace, you can follow the steps below. If you prefer your own, it is totally fine. Neither one is better than the other.

Workspace color

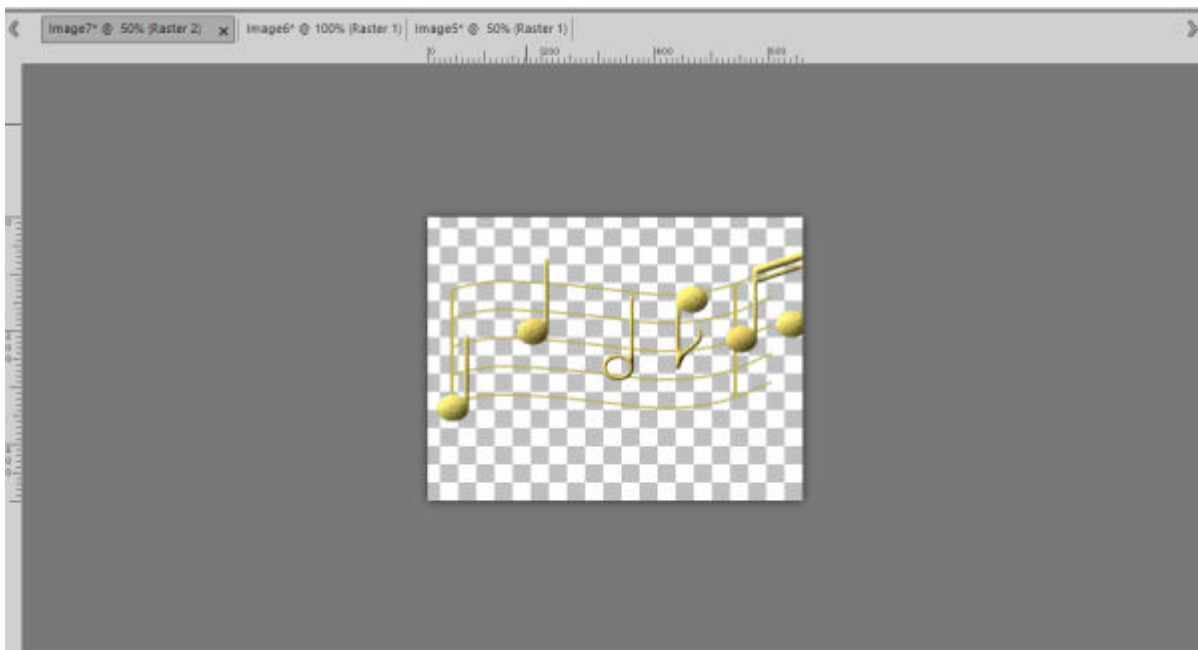
As I started using PaintShop Pro many versions ago, the workspace used to be blue. When version X2 came, it offered 2 choices for color: dark and light grey. At the time, I preferred light because I was used to that. Over time, medium grey was added and blue was also included, but only until version X5. So, I stuck with the Light Grey color, simply because it feels more familiar. Other people prefer dark workspace as they feel their photos stand out more. That is totally alright.

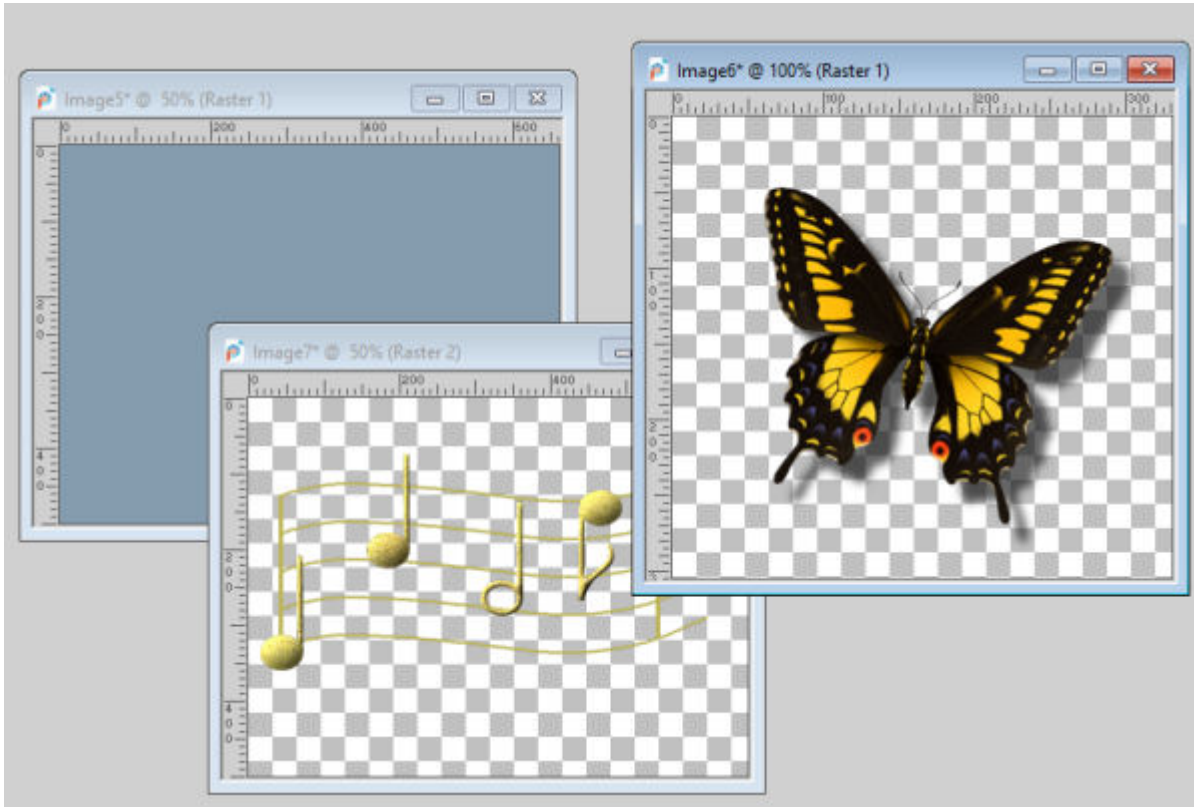
You can choose and change your workspace color under **View > Workspace** or, in more recent versions, under **User Interface > Workspace**.



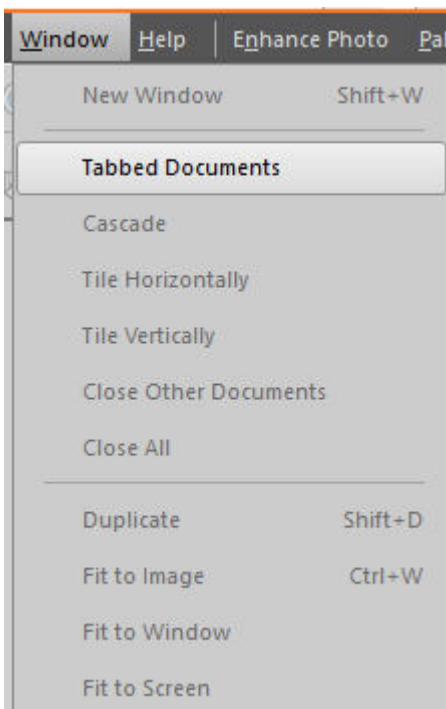
Tabbed or untabbed

Since a lot of my work involves scrapbooking projects, I like a workspace the looks like my desk would, if I had various elements, papers and photos on it. I don't like to use the default **Tabbed Documents** as it is set to default in the latest versions of PaintShop Pro. This seems to be a setting that a lot of PaintShop Pro users are looking for, but they just don't know that the default setting can easily be changed.



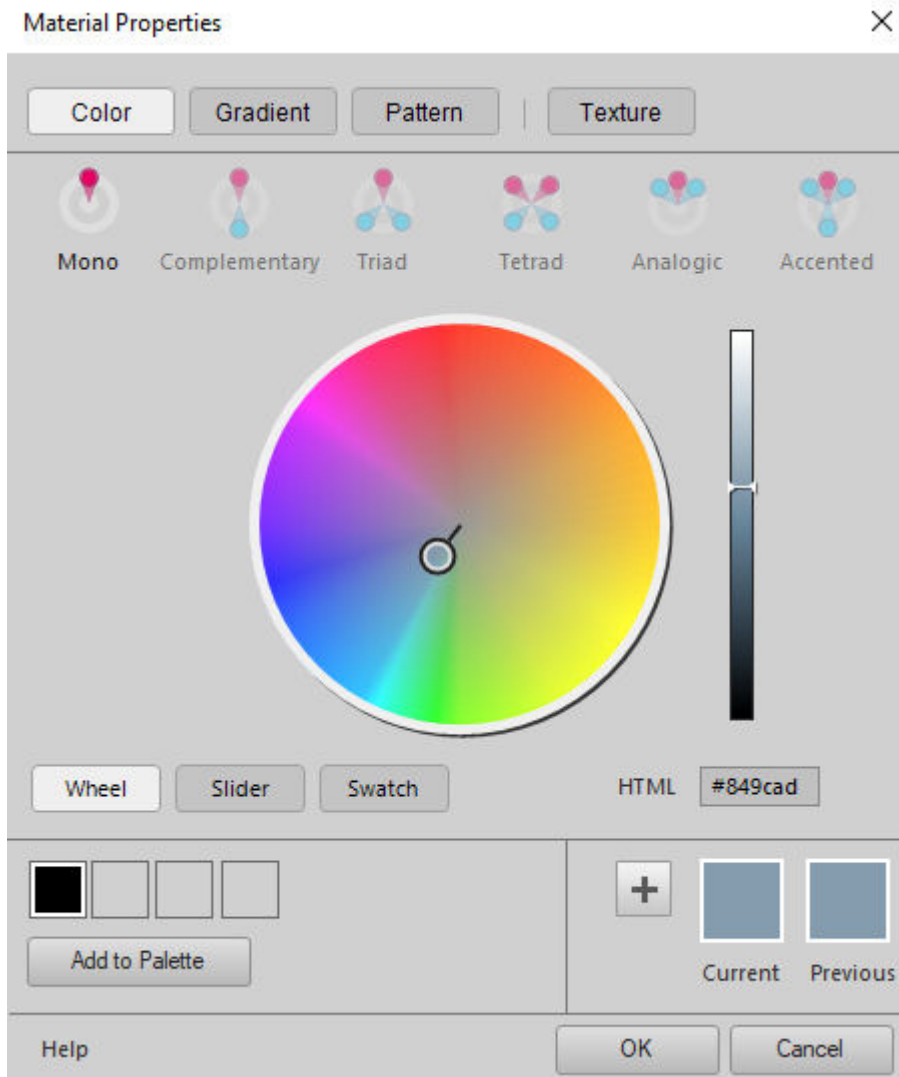


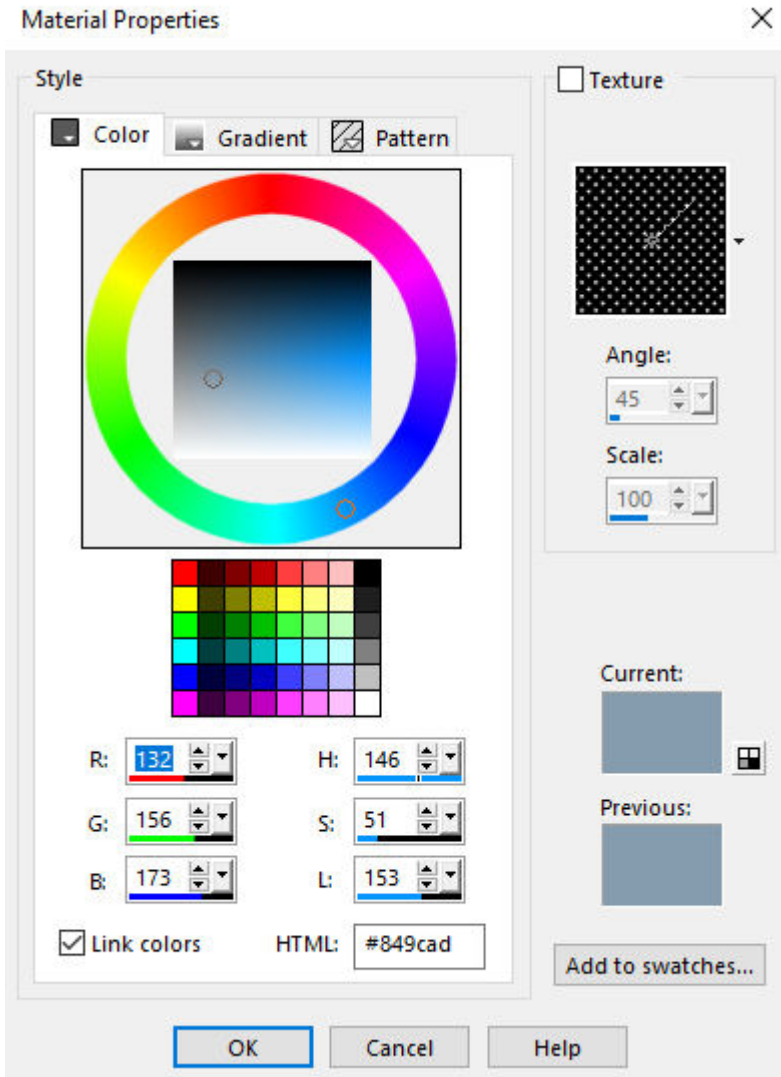
You can change that setting under **Window > Tabbed Documents** and uncheck that option.



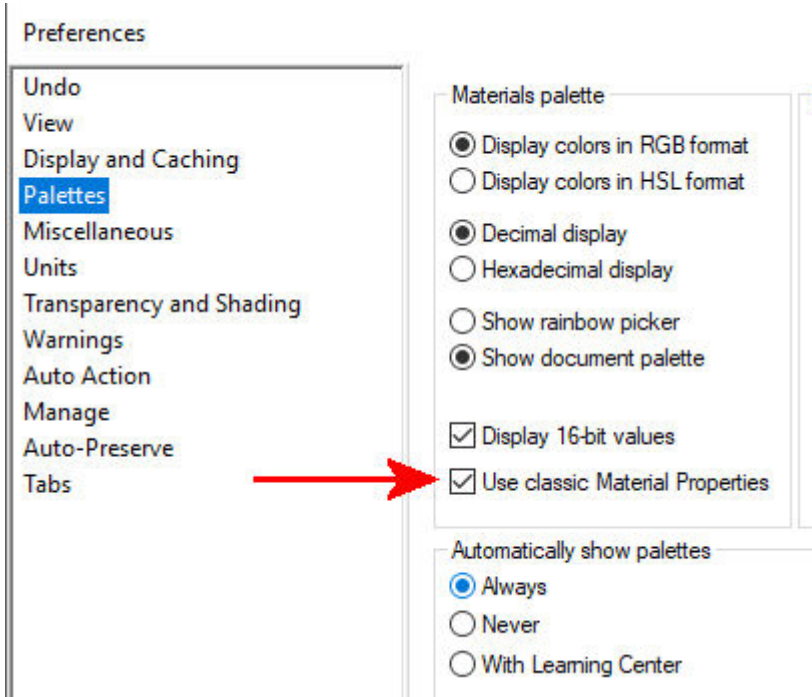
Materials Palette

In PaintShop Pro X7, Corel introduced an extensive new Materials palette along with a completely new Material Properties dialog window. It offered a new color wheel and new features like the ability to choose various palettes of complementary colors or, matching colors. It has been welcomed by a lot of graphics artists and painters as it gave them even more power over the color options, however, my needs are much more modest and I prefer the simpler original Materials palette. Since PaintShop Pro X8, we have the option to use that original Materials palette.



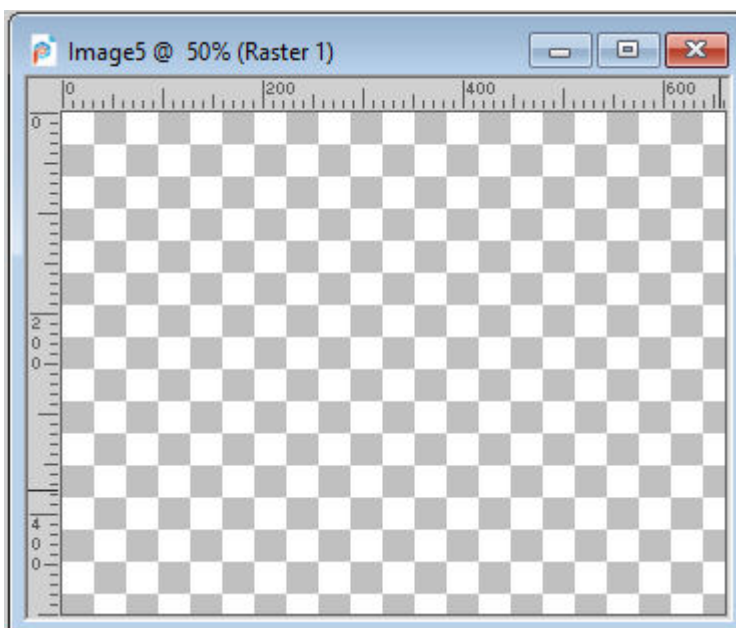


Go to **File > Preferences > General Program Preferences**, and select **Palette**. Check the option called "**Use Classic Material Properties**".

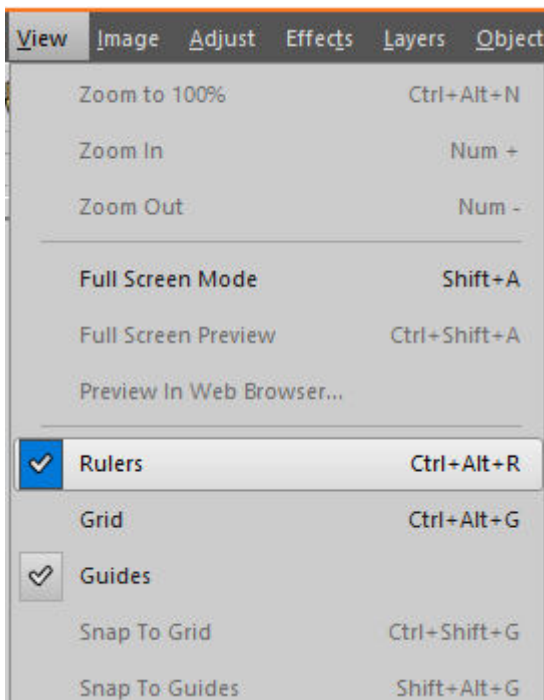


Add a ruler

I always like to have at least a vague idea of what size my images are. On the workspace, the image will often fill as much space it has available, whether it is 500 pixels or 5000. This can lead to issues when I need to layer different images together when I realize that one image is the wrong size for the project. Maybe the button is too small, or the overlay I want to use is 3 times too large. That is why I like to have a ruler. It does give me a sense of proportions.



Go to **View** > **Rulers** and click on that. You will see a checkmark appear, and every image will have a top and a left ruler from this point on.



Now it is your turn to customize your own workspace the way you like it. And you won't feel like I am using a totally different version of PaintShop Pro than you are!

Date Created

October 14, 2019

Author

myclone