



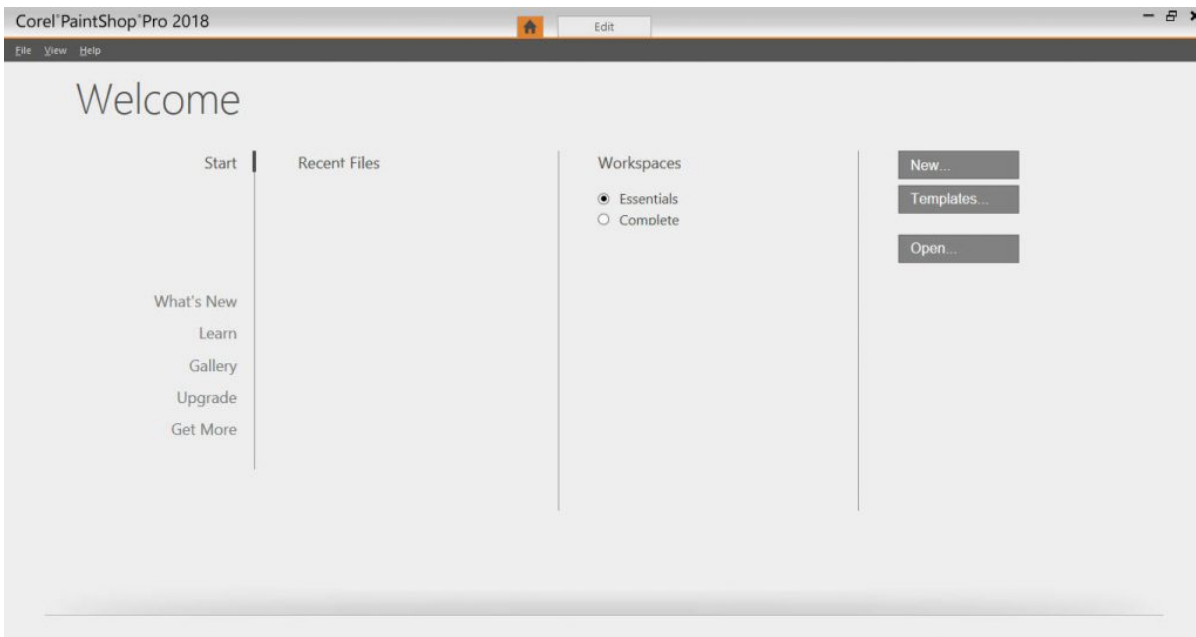
## Workspaces in PaintShop Pro

### Description

When Corel developed the version 2018 of PaintShop Pro, in 2017, one of their goals was to make the program and its interface easier for the users. Newcomers would have a simpler workspace with fewer tools so they would not be overwhelmed. Did that work? To some extent it did, but at the same time, it surprised many regular users who upgraded to that version. Even newcomers might be a bit lost if they try to follow some tutorials that use commands or tools that they can't seem to find.

### The first look

When someone launches PaintShop Pro 2018 for the first time, this is what they will see.

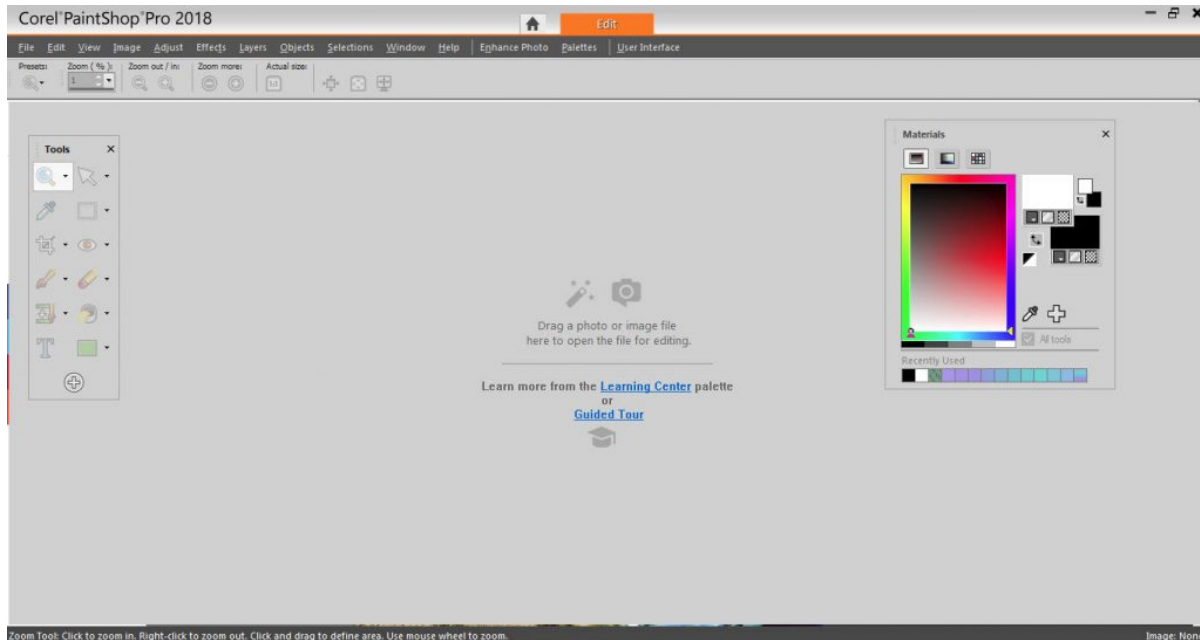


Although it is not obvious to the unsuspecting user, both workspaces are listed there, and by default, the **Essentials** one is selected. From this point, one could either click on the **New** button to create a

new project or click on the **Edit** tab if they want to start editing images.

## The Essential workspace

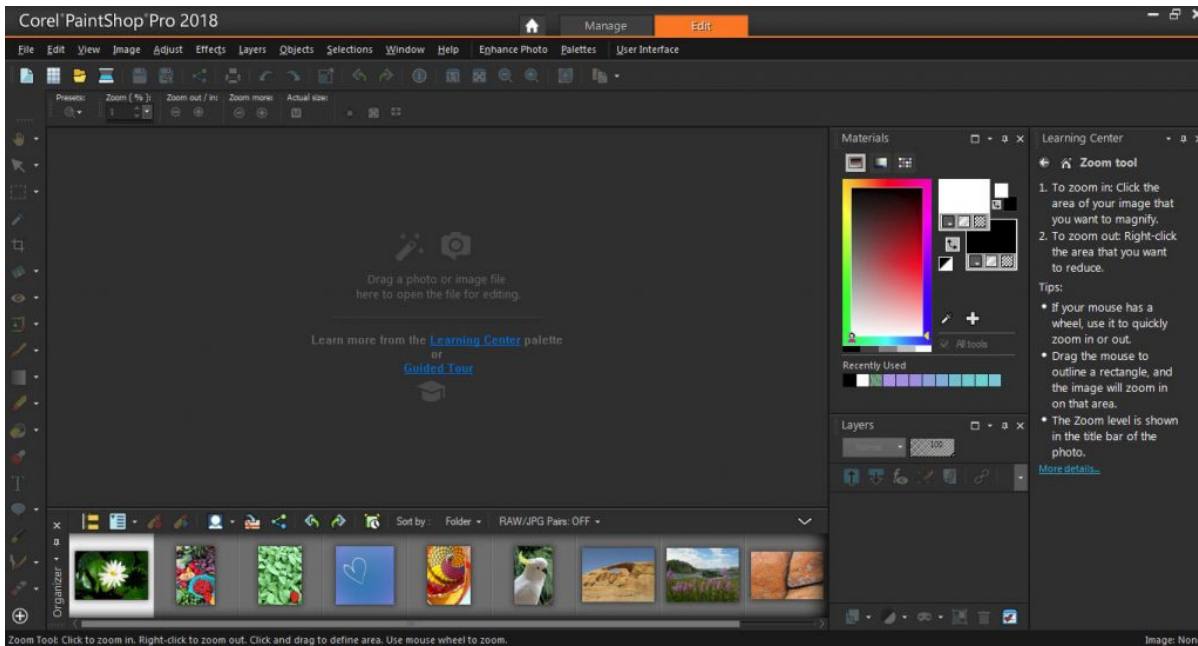
If you don't notice that the **Essentials** option is selected and you go ahead and start to work, this is the workspace you will see appear.



This workspace is clean, uncluttered and has lots of space to work. That is great if you are new to PaintShop Pro, but if you are already used to an older version of the program, you will immediately find that some sections, tools or commands are "missing", which might be quite frustrating.

## The Complete workspace

If you noticed the two options on the **Welcome** page and you choose the **Complete** workspace, this is what you will get:



Notice how this workspace is more crowded as it has several palettes and toolbars that are "missing" in the **Essentials** workspace. If you are new to the program, this could be overwhelming. However, if you are already familiar with the program, this will be a comfortable environment for you.

## Customizing the workspaces

Whether you are using the **Essentials** or the **Complete** workspace, you can always customize it. You can remove unwanted palettes from the **Complete** workspace. You can add tools to the **Essentials** workspace. And you can change the colors and text size for both workspaces. You can use either workspace that suits you.

## Some things are really missing in the Essentials workspace

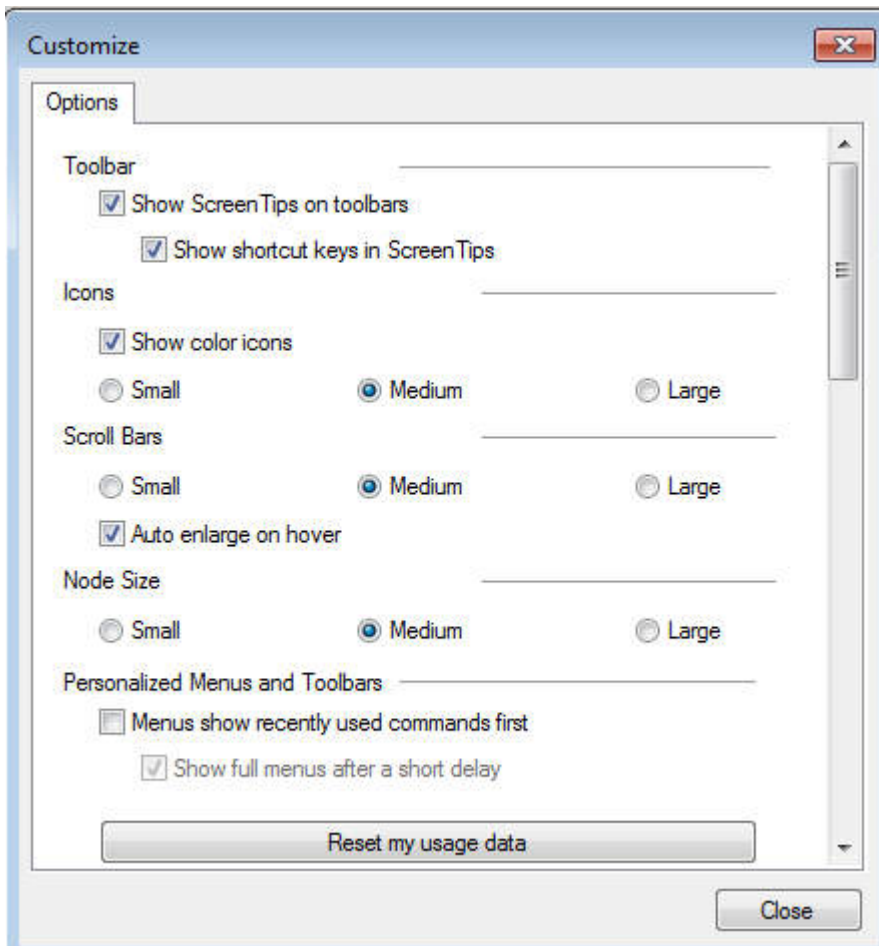
Although most commands are still accessible in the **Essentials** workspace, a handful of them are really missing. This is where frustration can arise because the unsuspecting user will think they are removed from their PaintShop Pro, which is not exactly the case since they are all included in the **Complete** workspace. The "issue" is that the users don't know.

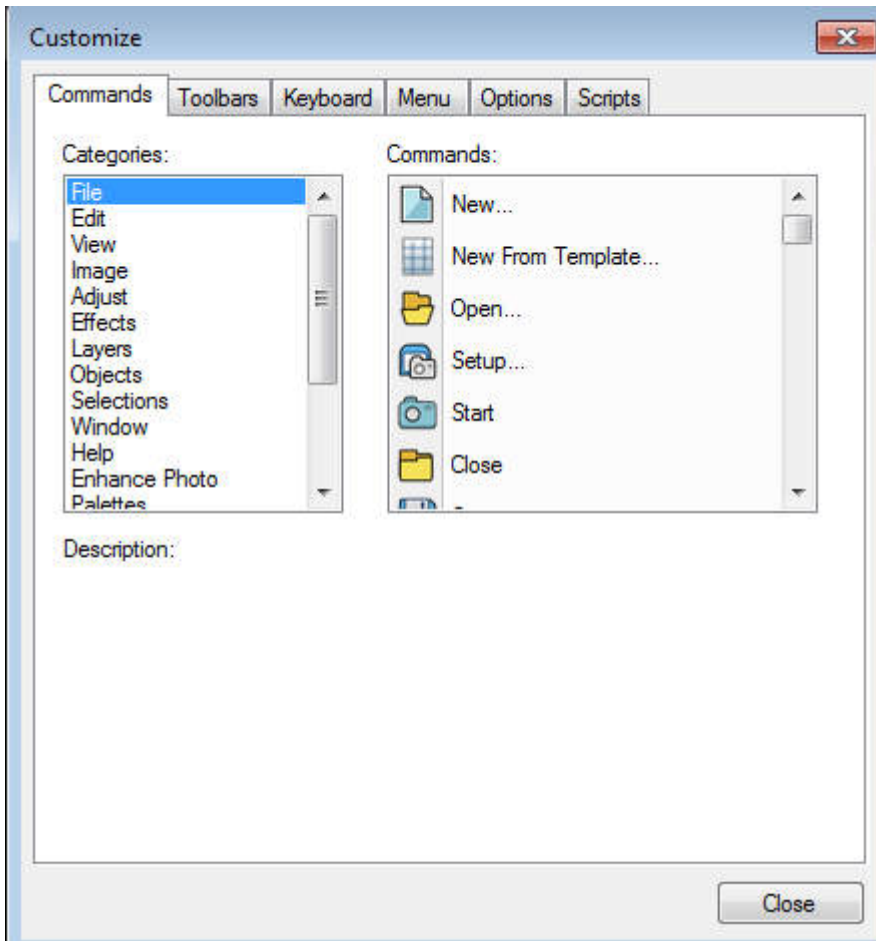
- **File location**

Many PaintShop Pro users have previously set the program to use resources outside of the default folders. They have brushes, picture tubes, presets, patterns, etc. in other folders and they can point PSP to those folders with the **File Location** command, which is normally found under **File > Preferences > File location**. However, this is missing from the **Essential** workspace. If you want to use the **Essentials** workspace for your projects, you would need to change to the **Complete** one to set those **File locations**. You can come back to the **Essentials** workspace after and the resources will be available.

- **Customize**

There is a big difference between the options available in the **Essentials** workspace and the **Complete** one. Typically, you can use the **View > Customize** to add icons to your toolbars. You can add commands to your menus. You can bind scripts. However, in the **Essentials** workspace, you have only one tab, which allows you to customize the display on your workspace. That's all. Here is a comparison of the **Customize** dialog window in the **Essentials** and the **Complete** workspaces:





Have you upgraded to PaintShop Pro 2018 or 2019? If you have been wondering what happened to the interface, or where are those tools or commands, don't worry, they have not been removed from Corel. Just select the **Complete** workspace, and you will be back into familiar territory. [Check this article](#) for more details about workspaces in more recent versions.

**Date Created**

March 18, 2019

**Author**

myclone