

## Scanning with your PaintShop Pro

### Description

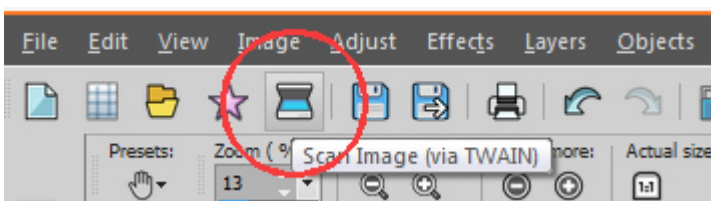
Do you have a scanner at home? Typically, you will likely be scanning images and photos, save them onto your hard drive, then open them in your PaintShop Pro. But did you know you could scan from PaintShop Pro too? It is a function that has been added in recent versions of PSP, and it can save you some steps. I recently found that out, and for me, it is great news because, for unknown reasons, I can't seem to connect the scanner to my computer and scan directly. Go figure! But with PaintShop Pro's functionality, now, I can scan!

### Install your scanner

Obviously, PaintShop Pro does not have scanning abilities by itself. It will rely on your scanner, so it has to be installed properly. I recently acquired a new printer/scanner, an **Epson ET-2550** (which uses ink in bottles instead of cartridges), so I installed it as my main printer.

### Get started

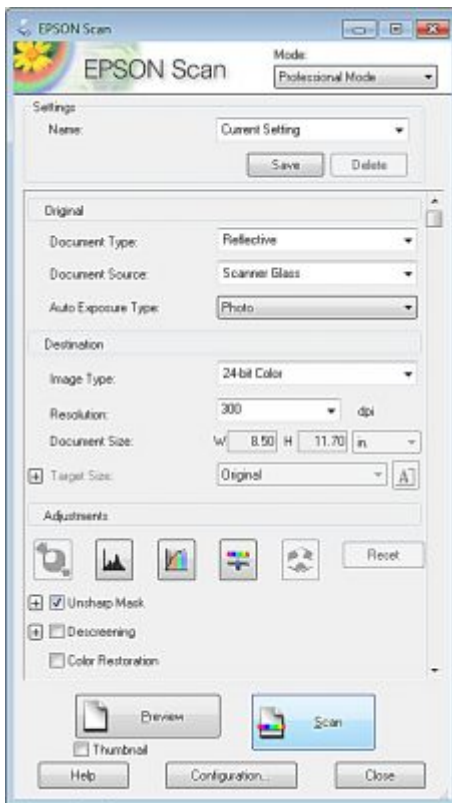
In the standard toolbar, you will find this icon that will start the scanning process, provided that you have installed your scanner properly.



Alternatively, you could go to **File > Import > TWAIN Acquire...** There is also the option to choose which scanner to use, in case you have more than one. That would be through **File > Import TWAIN Source...**

Starting the process will open the dialogue window for your particular scanner (which is probably going

to be different from mine).

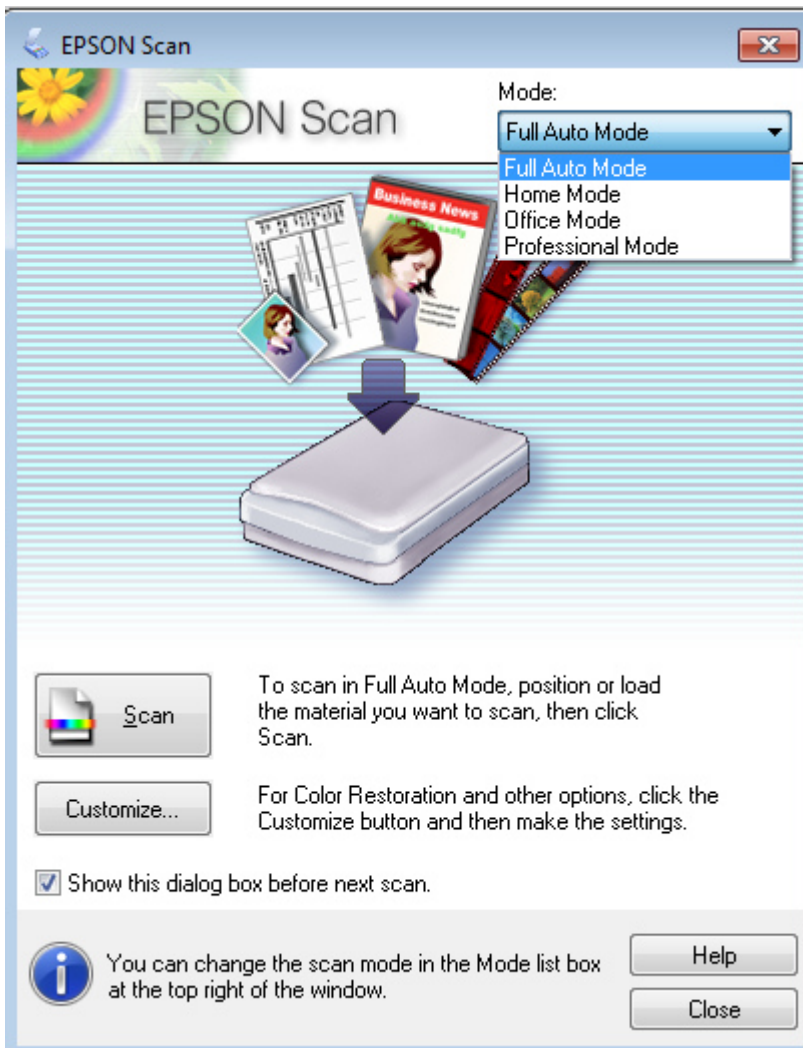


## Options to choose

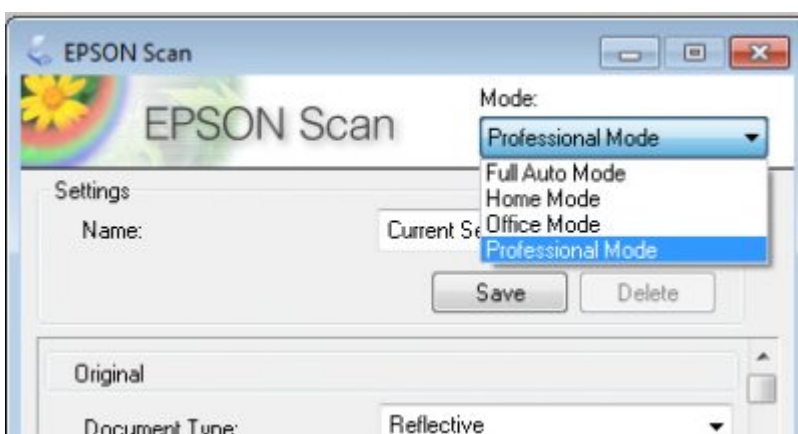
Depending on the particular model of scanner you have, the options available will vary, but I would assume that most of them will have similar basic settings, while some might have a few specific options.

Here, I have 4 modes to choose from, going from **Full Auto Mode**, where I don't have to bother with any settings, like the dialogue below, up to the **Professional Mode**. The **Home mode** will give me some settings related to photos (I guess they assume that home use of a scanner is for photos) and the **Office mode** will give me settings for scanning documents.

Here is the super simple dialogue window I get for the **Full Auto Mode**. As you can see, no setting at all. One click and that is all.



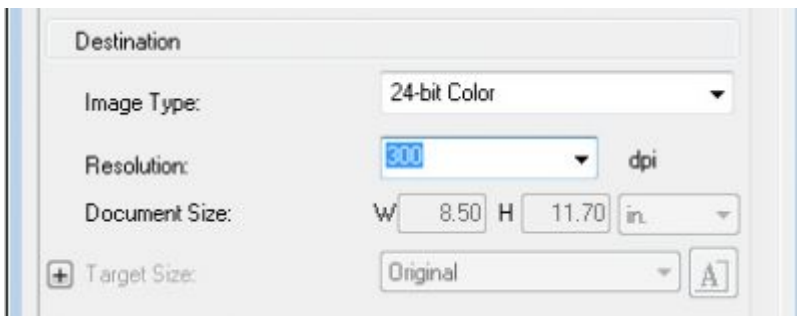
On the other hand, the **Professional Mode** offers a wide range of settings.



## Choosing the resolution

As mentioned in a previous article, scanning at a resolution of less than 300 is not going to yield great results, especially if you start with a small image. Remember that the more pixels you have to work

with, the better the result. My scanner can have a resolution as high as 9600. Talk about details you can catch!



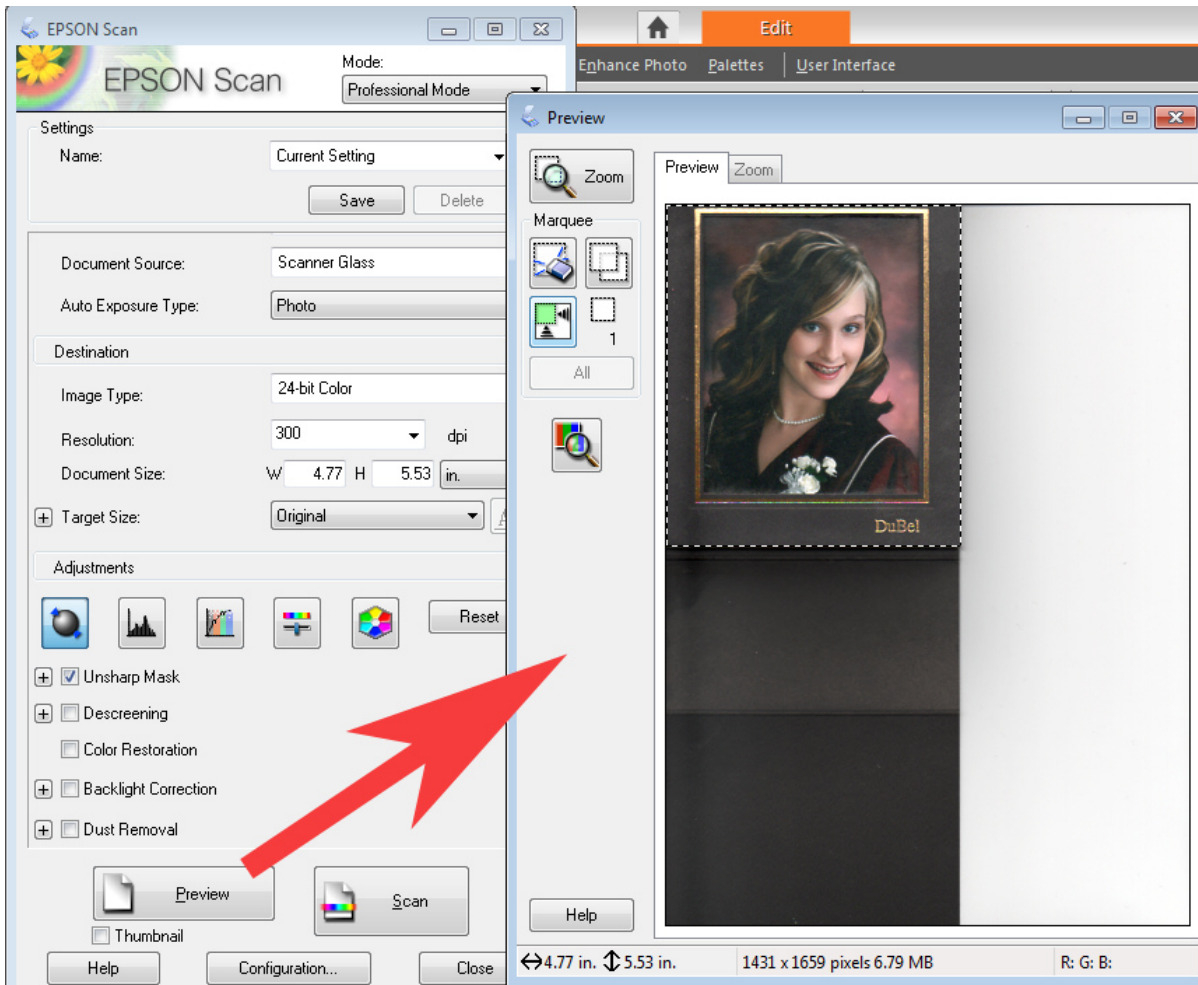
## Adjustments to use

Again, various adjustments are available directly during the scanning process. Unless the image is really in need of some adjustment before scanning, I would suggest that you leave things as they are, and do the edits in PaintShop Pro later. You will have more control over any adjustment.



## Preview the image

If you are scanning a photo or another memorabilia, you might not need to use the whole surface of the scanner, so you can select an area only, and that part will be imported once scanned. If you wanted to play with the settings, you could also view the resulting changes, but again, I would suggest creating your original without changing the settings. After all, you have PSP and it is more powerful than your scanner.



## In your PaintShop Pro

Once the **Scan** button is clicked, and the scanning is completed, the selected image will appear in your PSP, ready to edit.



Having found this function, and realizing that it works directly with my scanner is a great discovery for me. Do you scan photos too? Now it is time to scan all those old pictures, found in a shoebox. No time to waste!

If you are interested in the printer/scanner I am using, it is an [EPSON ET-2550 model](#) (*this is an Amazon affiliate link and I do get a commission if you use it. However, it is also available at other stores, like Staples, which is where I purchased it*)

**Date Created**

June 25, 2018

**Author**

myclone