



Theme – Chinese New Year

Description

You may or may not celebrate the Chinese New Year, but it sure is celebrated in many parts of the world and your city may be one of such places!

Did you know that there are 12 different animals in the Chinese zodiac? The new year ushers in a new sign for the next 12 months and this year will be the year of the dog. The Chinese New Year will be celebrated on February 16th.

Chinese New Year Parade

Like with most festivals, the Chinese New Year starts off with a colorful, boisterous parade down the main street. It usually features brightly colored costumes, lion and dragon dancers, and of course, fireworks and firecrackers.



Layout by Laura

First Day of the New Year

The first day of the new year is full of activity! One Chinese New Year tradition is dressing up in new clothes and greeting each other a happy new year. Young people visit their elders to wish them health and longevity.



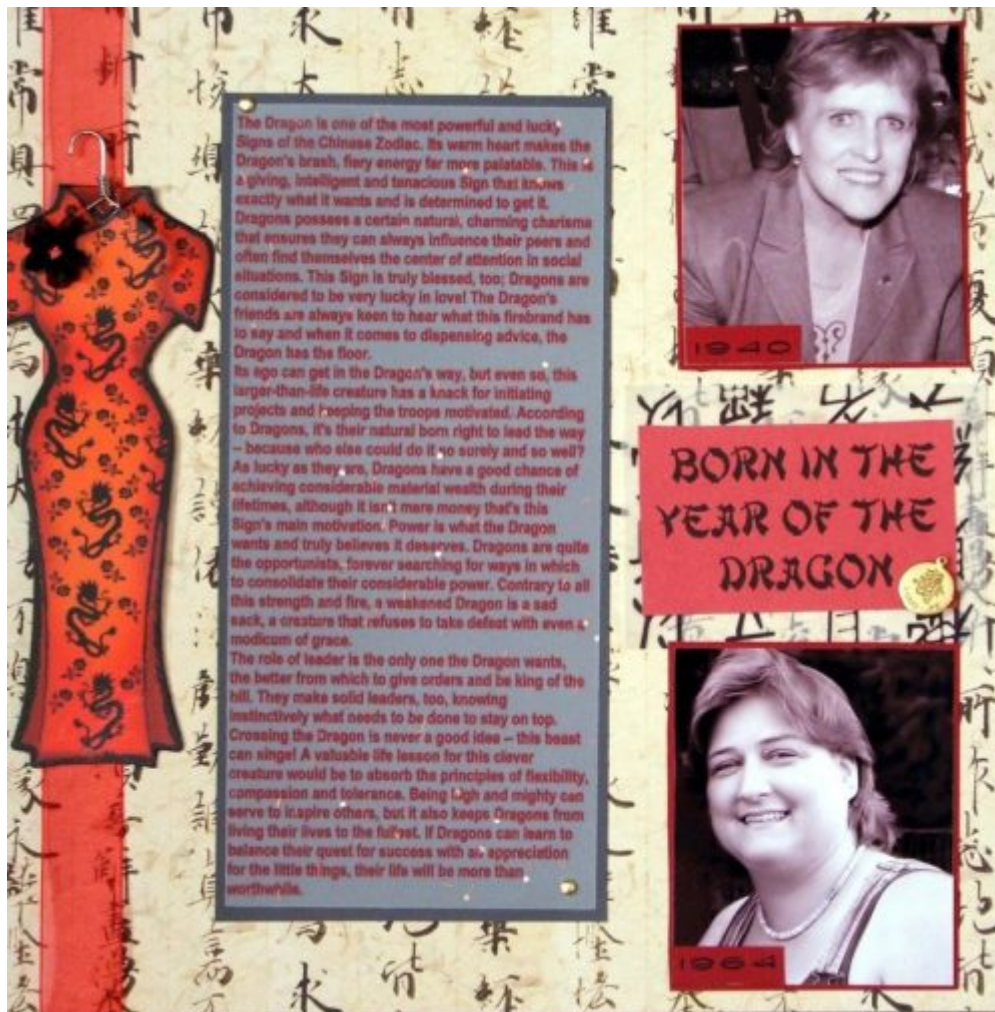
Layout by Sharon

Year of the Dragon

The latest year of the dragon that we celebrated was last 2012. People born in the year of the Dragon are powerful, brave, and kind-hearted. However, they also tend to be conceited, tactless, and quick-tempered.



Layout by Tracy



Layout by Diane

Year of the Horse

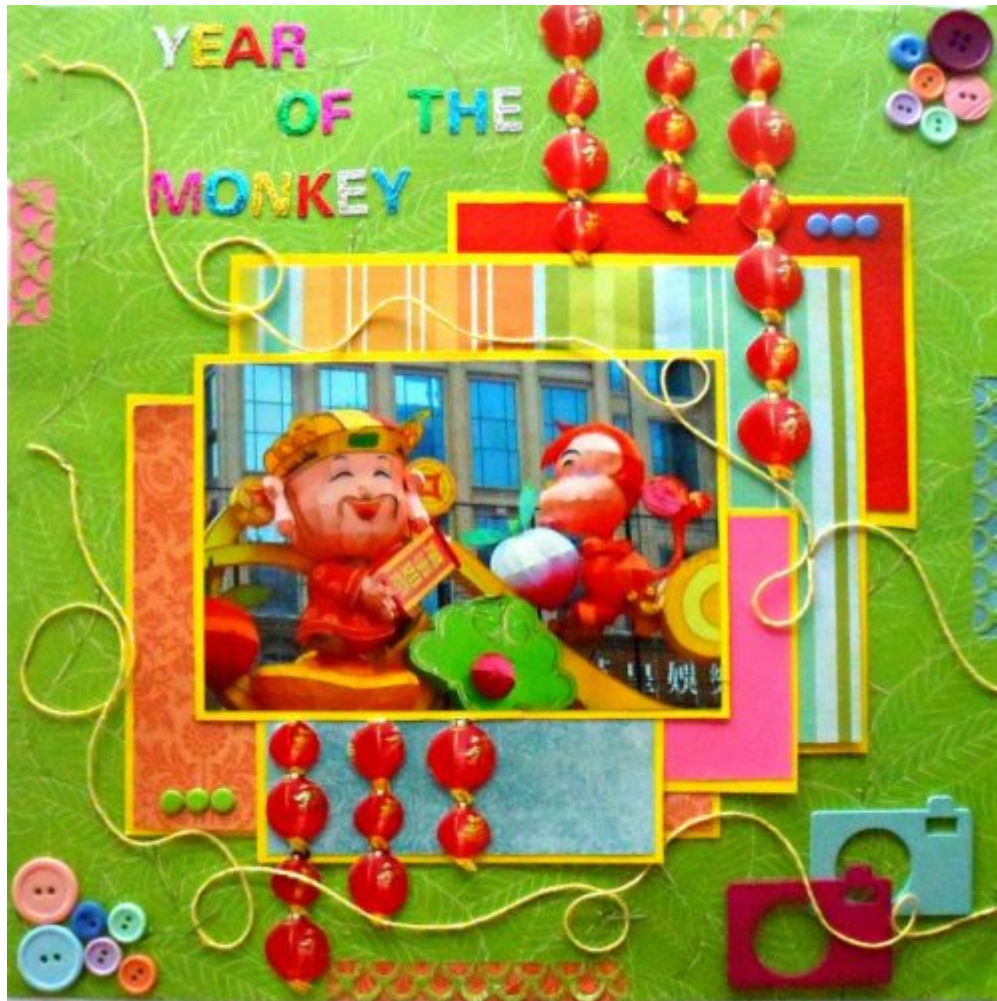
Four years ago was the last time we celebrated the year of the horse, and the next will be on 2026. Wise, discreet, and attractive are some of the positive attributes that people born under the horse sign are said to have.



Layout by Julie

Year of the Monkey

We celebrated year of the monkey just two years ago. Those born under the monkey sign are said to be intelligent, confident, charismatic, and loyal; but they can also be arrogant, impatient, and snobbish.



Layout by Lynne

Year of the Dog

And of course, 2018 being the year of the dog, a collection of layouts featuring these furry pets must be in order. It is said that the dog is the symbol of honesty, frankness and loyalty. People born in the year of the dog are honest and just. They are also popular in their social circles.





Layout by staciahall



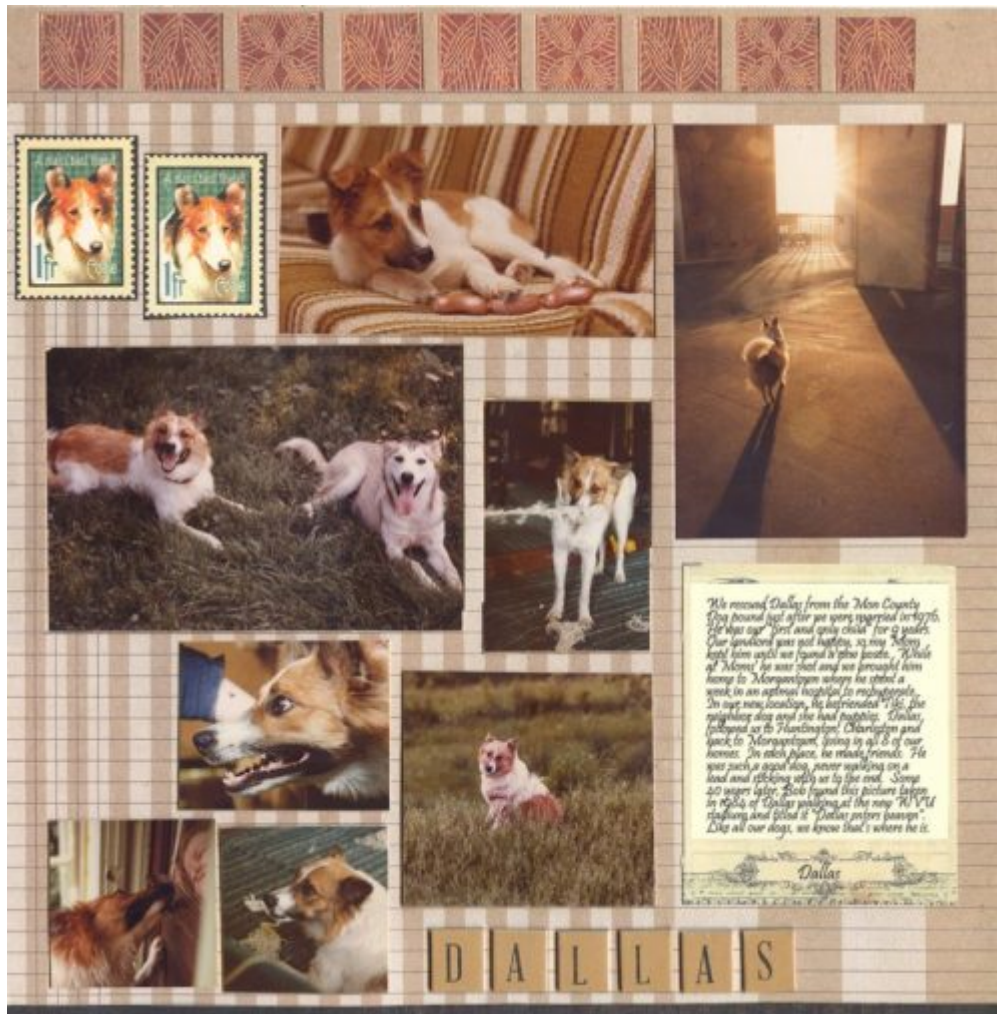
Layout by Christy



Layout by GentlewoodFarms



Layout by Linda



Layout by Cindy



Whatever your sign is, it could be one of those elements you

can add to a page about you (or someone else you make a layout on). If you don't want to draw your own sign, how about this set of 12 tokens? Your sign is obviously among them so you can use it.

Simply [click HERE](#) to get those tokens.

Date Created

February 1, 2018

Author

myclone