

Which files do you need to **EXPORT** in PSP?

Which files do you need to export in PSP?

Description

PaintShop Pro includes several functions to export various files and content so they will be used inside specific tools of the program. This export command will convert files from something generic, into a program specific file format. How do you know when you need to export a file and when you don't need to? Let's see.

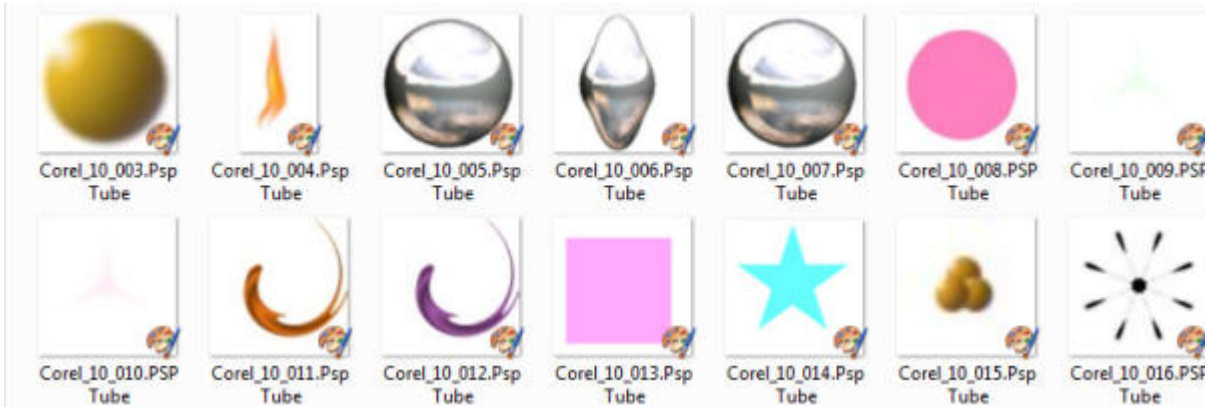
Picture tubes

As we have mentioned in previous posts, "picture tubes" are often confused for "tubes" created by "tubers". Although they are both a type of extracted image without a background, they are used slightly differently. Do you need to export them or not?

If the file you get is a *.PspTube* format, it means that the designer already exported it as a tube. In that case, you only need to save the file in the **Picture Tubes** folder and you should be good to go. If you try to export a *.PspTube* file, you will end up with a picture tube that won't work well when you activate your **Picture Tube** tool, and select a tube in your drop down list.

Files with *.tub* extension are also ready to use. That extension is simply the one used in older versions of PaintShop Pro, and can be used as-is.

If the file you downloaded is a *.PspImage* or a *.png* file, you MIGHT want to export it as a picture tube. When you export it, it will then appear in the **Picture Tube** list, but the first question you have to ask yourself is whether you want or even need it as a picture tube or if you can just as easily copy and paste this image instead of overloading your picture tube list. That is up to you.



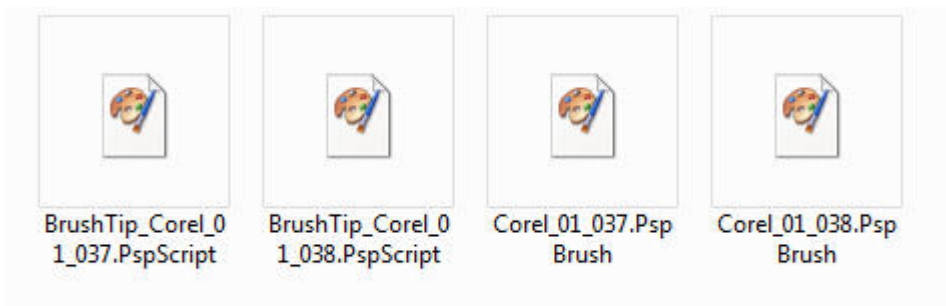
Brushes

Buying or downloading brushes often lead to frustration when you don't have a clue whether you should export the file as a **Brush** or not. Let's see when you should or shouldn't export.

Exporting a brush means you are **CREATING** a brush from an image or a shape that is open in your workspace. So if you have a particular design that you want to see available in the dropdown list of brush tips, you will create it with **File > Export > Custom Brush**.

If you buy or download a brush that has an **.abr** format, it means that this brush was created for Adobe Photoshop. Luckily, since PaintShop Pro version X5, you can *import* those brushes into PSP with the simple command available under **File > Import > Custom Brush**. This process will convert the **.abr** files into a format that will be read by the **Brush** tool.

Now, what if you download brushes and they have the **.PspBrush** extension? Although this format is, in fact, a format that can be read by PaintShop Pro, every brush needs **TWO** files: one that has **.PspBrush** extension, and one that will start with **BrushTip_** and will have a **.PspScript** extension. If you have both files when you download a brush, you can safely save them both in your **Brushes** folder and they will appear in your list of brushes. If you only get a **.PspBrush** file, you need to treat it as if it were not a PSP brush, and you will have to import it. It might seem counter-intuitive, but you will need to save the initial file you had somewhere **OTHER** than in the **Brushes** folder, so PaintShop Pro will be able to create both files together and place them in the **Brush** folder together.

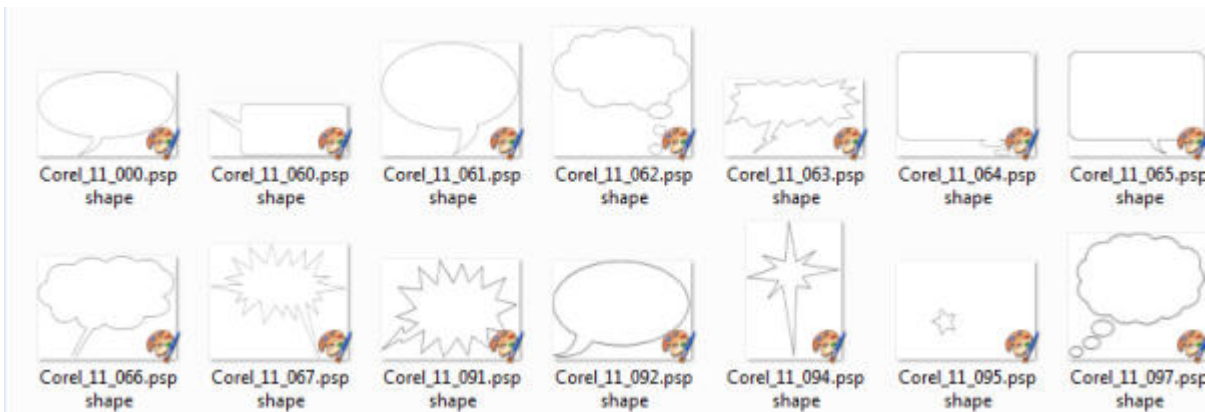


Preset shapes

Instead of drawing all the shapes ourselves, it is nice when we find some that are already made. If you find shapes that have a *.PspShape* format, you are in luck. You don't have to export them since PaintShop Pro can already read them. Just save them in the **Preset Shapes** folder and you are good to go.

Some preset shape files might also come with a *.jsl* extension and they can be just saved as is in the **Preset Shape** folder. Don't export or import those.

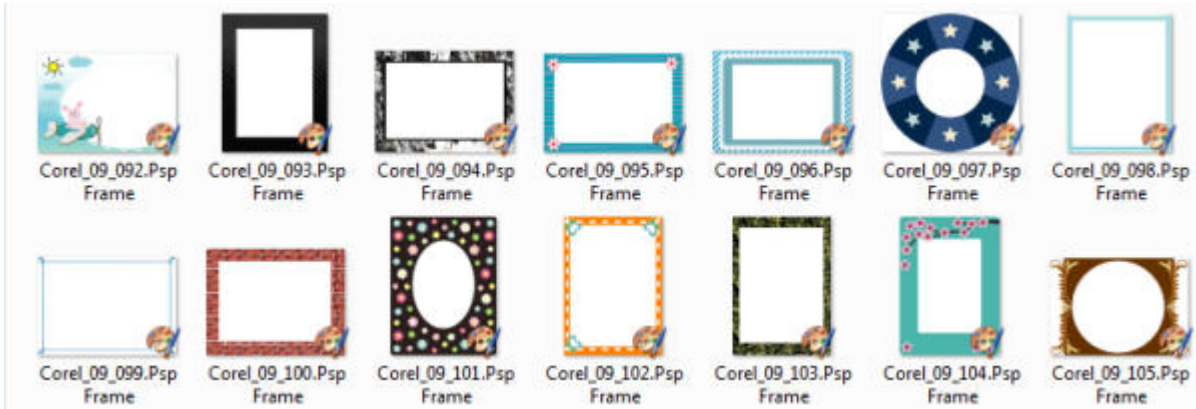
If you are creating your own vector shapes and want to reuse it later, then you can export them with **File > Export > Shape**. Remember that the name of the shape will be the name of the vector object, and NOT the name it asks you to enter, so beware of this little annoyance!



Frames

Although you will not find those types of files very often to purchase or download, they are easy to identify. If they have the extension *.PspFrame*, they are already in the correct format for PaintShop Pro to read them, so just save them as is, in the Picture Frames folder.

If you download any other kind of frame, you can just use it as a regular *.png* image and copy and paste it onto your project. Not all frames need to be turned into *.PspFrame* files but if you do, then you will have to open the file in your PSP, and export it with **File > Export > Picture Frame**.



Other files

Some other files will be included with tutorials or other projects. Basically, if they have an extension that starts with *.Psp*, just save them in the appropriate folder and they should be ready to use. You can find files with extensions like *.PspSelection*, *.PspDeformationMap*, *.PspStyle*, *.PspGradient* and *.PspStyledLine*. They are not as common as the previously named ones, but you might see them on occasion. Don't do anything with them. Save them, and use them!

Date Created

July 25, 2016

Author

myclone